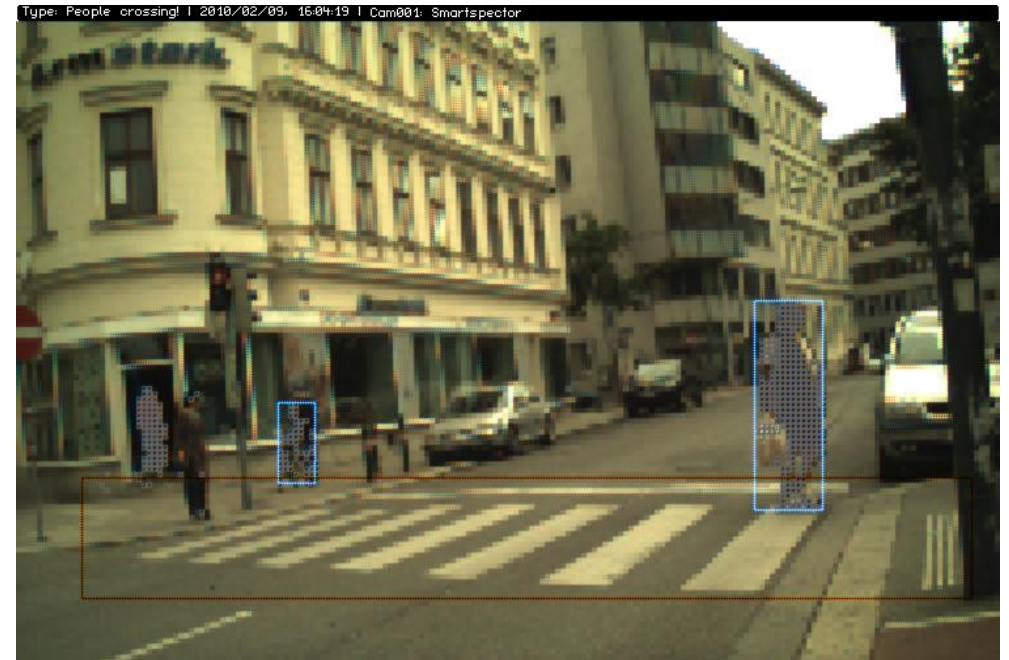
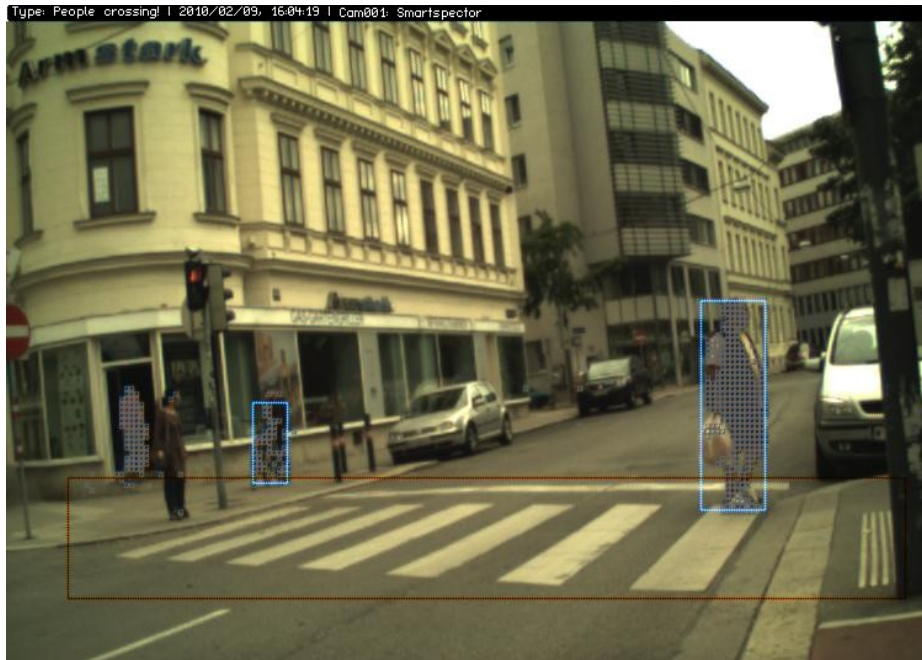


# SMARTSPECTOR Pedestrian!Detector™ Anonymization of result images (patent pending)



## High resolution result image with motion detection

Above full-size raw image shows a preset detection range for passengers (red rectangle). Moving regions are masked automatically to validate proper system operation and to make the identification of people more difficult. Moving people within the detection range are bordered by a blue rectangle.

Given that still people and parked vehicles cannot be discerned from a complex background scene, those parts of the scene are shown true to detail. In other words, the sole elimination of automatically detected people and vehicles fails to remove personal data (e.g. faces, number plates) dependably.

## Smartspector lanus™- reliable anonymisation of all output data

Smartspector lanus™-technology also reliably de-identifies motionless people, vehicles and other image details by scaling down the result image in an application related manner. The device processes all relevant data inside the camera and forwards only anonymous results and images. This is safeguarded by a factory-provided and factory-sealed device configuration.

The applied measures reliably disable any access to personal data and accommodate the demand for protection of privacy in the best possible way.



**SMARTSPECTOR** artificial perception engineering GmbH

Sonnenhofgasse 6/14, 1050 Vienna | Austria | FN 276499t | CEO: Dieter Schmidradler | Phone: +43 (0) 664 8559 281 | Mail: office@smartspector.com | Web: www.smartspector.com  
Erste Bank, IBAN: AT33 2011 1288 1891 2000, BIC: GIBAATWW | tax number: 244/8068 | VAT: ATU 62514755

Version: 101220

© SMARTSPECTOR artificial perception engineering GmbH  
Specifications subject to change without notice. All rights reserved.